

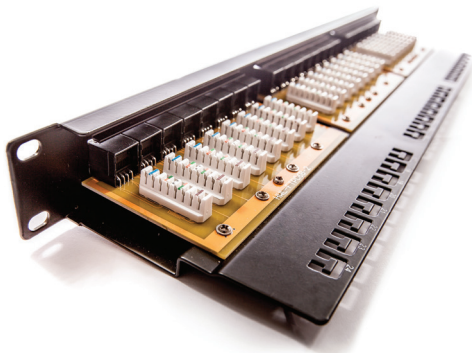
# Patch panel KOMPAKT, Category 6, 24xRJ45/u

P/N: 606059

1  
Gigabit

Cat.6

250  
MHz

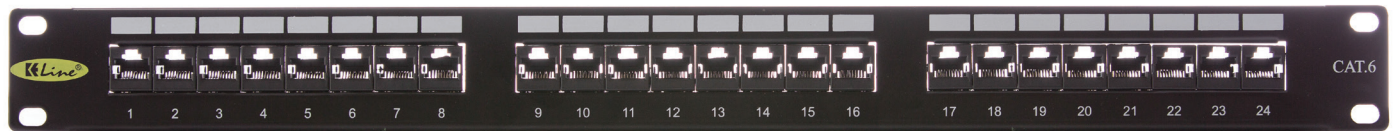


## features

- 110 / LSA termination blocks
- fast and easy installation using 110 or Krone® insertion tool
- enables transmission of all high-speed protocols including 1000BASE-T
- guarantees a bandwidth of 250 MHz
- not shielded against electromagnetic interference
- designed for 19" cabinets
- integrated cable management

## application

- primary (Campus), secondary (Riser), tertiary (Horizontal)
- IEEE 802.3: 10Base-T; 100Base-T; 1000Base-T
- IEEE 802.5 16 MB; ISDN; FDDI; ATM



## construction

Height	1U (44,5 mm)
Width	19" (482,6 mm)
Depth (including cable management)	115 mm
Material	steel
Color	black RAL9005
Surface	structured, matt

## mechanical properties

Suitable for cables with solid wires	from 0,51 to 0,64 mm (AWG 24 - AWG 22)
IDC contact material	nickel plated phosphor-bronze alloy
Contact pin material	plated phosphor/bronze alloy
IDC retermination	min. 20
Insertion / extraction cycles RJ45	min. 750

## electrical properties

Current rating	1,5A max
Insulation resistance	1000 MΩ max
Dielectric strenght	750V AC, 60Hz 1min
Contact resistance	100 mΩ max

**related products**

P/N: <a href="#">KEJ-C6-U-TL</a>	Keystone Jack, Category 6, RJ45/u
P/N: <a href="#">601140-UP + KEJ-C6-U-TL(2)</a>	Modulo50 outlet, Category 6, 2xRJ45/u
P/N: <a href="#">601120-UP + KEJ-C6-U-TL(2)</a>	Modulo45 outlet, Category 6, 2xRJ45/u
P/N: <a href="#">KE400U23LSOH</a>	UTP cable 4x2xAWG23, Category 6, 250 MHz, LSOH
P/N: <a href="#">KEN-C6-U-xxx</a>	UTP ptach cable, Category 6, LSOH