

## Network interface type CS141

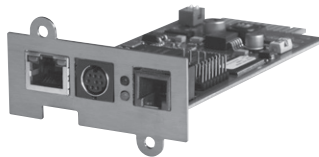
3 109 30 - 3 109 31 - 3 109 32 - 3 109 33 - 3 109 34 - 3 109 35



3 109 33

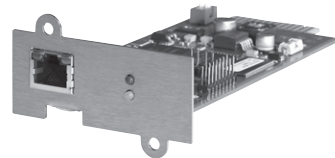


3 109 34



3 109 35

3 109 30



3 109 31

3 109 32

### 1. FEATURES

- **High-Tech made:** 32-Bit RISC-Processors, 10/100 Mbit auto-sensing Ethernet, 2 serial RS-232 interfaces (not "B" version), AUX port for 4 dry-contact external alarms output/input (not "B" version). Optional: MODBUS RS 485 interface.
- **Scheduler:** Web server based Scheduler allows scheduled on/off of the UPS output or SITESWITCH receptables or to start battery tests. This secures that the UPS runs regularly battery tests and informs the user about problems via Email, logfile, etc.
- **Graphical and non-graphical interfaces:** Several options are available for monitoring and configuring the adapter both visual: Windows UPSMON, JAVAMON, UNMS, every type of SNMP network management station, internet browsers and non-visual: TELNET, FTP. Additionally supported is the GENEREX API. The statistical analysis is graphically shown through the GCHART plugin for the Microsoft Internet Explorer. Those statistics show the values of the UPS and all connected external devices like temperature, humidity, etc.
- **Multiserver Shutdown:** Unlimited shutdown manager for RCCMD clients - for more than 40 different operating systems. This makes it possible for a CS141 adapter to inform and shutdown any type of computer in a given network which can then be used to centralise the administration of large networks while greatly reducing both the amount of organisational work and the amount of consumed network time for communications. Different methods are available for conducting shutdowns and system start ups:
  1. Coldboot (Computers are directly cut-off from or connected to the power supply. This option may require a SiteSwitch).
  2. Warmboot (Using RCCMD operating systems are prompted to shutdown or restart).
  3. Wake on LAN (Using data packages other computers in a local network are prompted to start-up).
- **Log book:** Measurement values and alarms are written with time stamps into the non-volatile storage of the CS141 adapter. The time synchronisation function insures that all protocols are written with precise time values.
- **Graphical operation and statistics:** The CS141 WEB-Server provides its users with a simple to use overview for a broad range of functionality within its monitoring and configuration capabilities. The CS141 adapter also has the highest performing graphical analysis tool in its class for dynamic data evaluation.
- **Network Services:** UPSMAN compatible software for Alarm management. Supports SNMP, HTTP, Telnet, ARP, TCP, UDP, DNS, SMTP, NTP, FTP, UPSTCP (UPSMON, UNMS), RCCMD, RCCMD2 (Multiserver/Multi-OS shutdown/messaging tool).

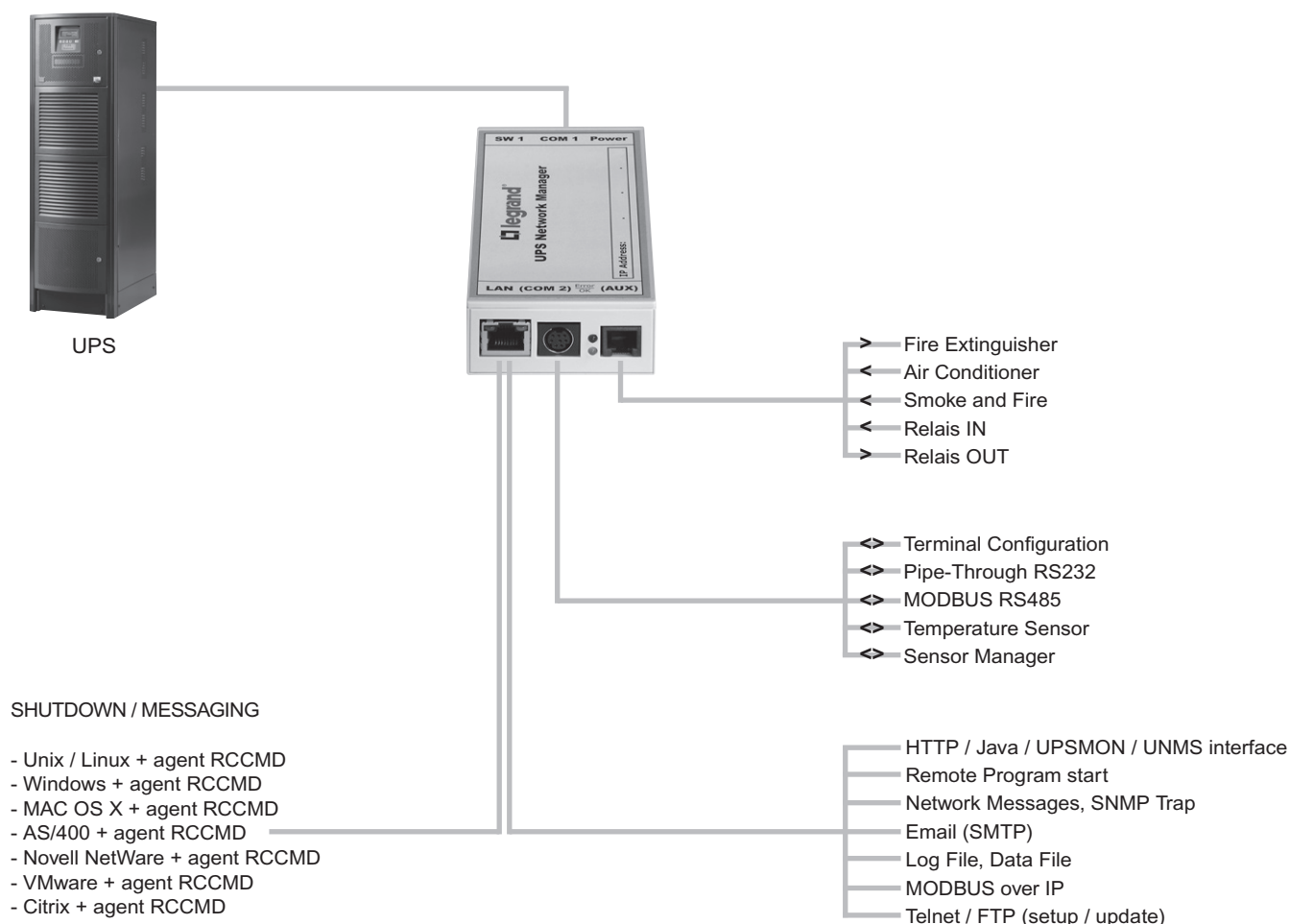
Standard basis for the new UNMS 2 network management system.

- **Email:** Integrated Email client via SMTP can be configured to relay either all or select UPS messages. The Email client can also make use of network messaging options for distributing information or use network internal email facilities. Compatible with SMTP email systems such as MS Exchange, Lotus, and many others.
- **SNMP I HP OpenView:** Includes free Snap-In for HP OpenView for Windows. The CS141 supports the RFC1628 MIB (Standard UPS MIB) and MIB extensions for use with the SITEMANAGER, and SENSOR MANAGER. This enables the CS141 adapter to make all of its gathered information from other devices available via SNMP and this has been tested with Sun Net Manager, IBM NetView, Tivoli, Unicenter, Cabletron Spectrum, ManageWise, Castle Rock and many other SNMP based network management systems. Additionally Ipswitch Whats UP 6 and HP/COMPAQ InsightManager are supported.

# Network interface type CS141

3 109 30 - 3 109 31 - 3 109 32 - 3 109 33 - 3 109 34 - 3 109 35

## 2. FUNCTION OVERVIEW



**Picture:** function overview of the CS141. The CS141 B is an economic version of CS141 and has no COM2 (sensors, modbus, Pipe-Through, Terminal configuration) and AUX (dry contact interface). Beside this the CS141 B is identical to the full qualified CS141.

## 3. TECHNICAL DATA

Technical data	CS141 / CS141 B "External"	CS141 / CS141 B "External"
Power supply	9 ÷ 36V DC, 350 mA	9 ÷ 36V DC, 150 mA
Size, weight	69 x 126 mm, 210 g	60 x 120 mm, 66 g
Ethernet	10 / 100 Mbit Base-T auto sense	10 / 100 Mbit Base-T auto sense
RS-232 interface	2 (only 1 in "B" version)	2 (only 1 in "B" version)
RS-485 interface	Optional (not for "B" version)	Optional (not for "B" version)
MODBUS over IP	Yes (not for "B" version)	Yes (not for "B" version)
Status LED's	Normal green, boot/error red	Normal green, boot/error red
User manual	English, German	English, German
MIB	RFC 1628 and private extension	RFC 1628 and private extension
Operating temperature / humidity	0 ÷ 40 °C 10 ÷ 80 %, not condensated	0 ÷ 60 °C 10 ÷ 80 %, not condensated
Certifications	CE, UL	CE, UL
Warranty	2 years	2 years