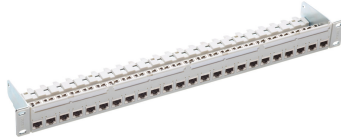


Product information

19" 1U PC Patch Panel 24xRJ45/s, Cat. 6A EL, gray, fully populated

R813489
1 Pcs.



- 19" 1U 24-port patch panel, empty, shielded
- 24 RJ45 Cat. 6A EL connection modules, shielded and dust covers
- 19" mounting kit
- 4 labeling strips
- Cable ties
- Installation instructions

090.7197

Technical Data

DESCRIPTION [UNIT]	VALUE/VALUE RANGE
Standard	IEC 60603-7-51: Electrical Characteristics of the Telecommunication Outlets ISO/IEC 11801 ed. 2.2: June 2011 EN 50173-1: May 2011
Protection class IP	IP 20
PoE	Yes
Shielding connector (A)	shielded
Connector type (A)	RJ45
Category connector (A)	Cat. 6 _A ISO
Number of connectors (A)	24
Holder for connector / module	Special (without mounting plate)
Assembly	fully populated
Fastening	19 "
Rack mounting version	patch panel
Capacity (ports)	24
Amount of Height Units	1 U



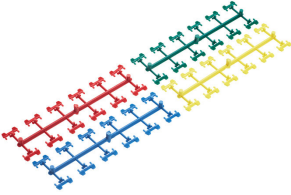
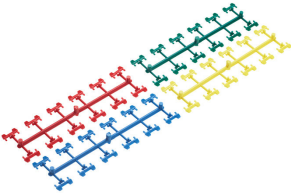
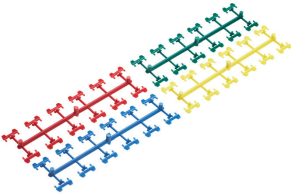
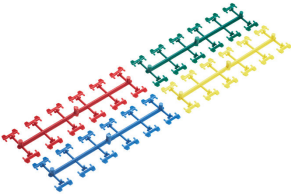
Mechanical Data

DESCRIPTION [UNIT]	VALUE/VALUE RANGE
Width	482.6 mm
Height	43.65 mm
Depth	83.4 mm
Color	front, medium gray (NCS 2502-B) / steel, blue, chromatinized

Modular patch panel with integrated cable tie shelf, integrated grounding system, 19" fastening kit, labeling fields with exchangeable labeling strips. The ports are prepared for a visual color coding system and automated

infrastructure management systems. Panel polycarbonate, fiber-glass-reinforced, halogen-free material, UL 94 listed and steel: DC01 (1.0330), 1.5 mm. Color front: medium gray (NCS 2502-B) / steel: blue, chromated. RJ45 connection module of Cat.6A ISO, for the setting up of transmission channels of Class EA with up to 4 connectors acc. to ISO/IEC 11801 ed. 2.2, June 2011, EN 50173-1 May 2011 (DIN EN 50173-1), complies with Cat.6A requirements of the standards ISO/IEC 11801 ed. 2.2, June 2011, EN 50173-1 May 2011, as well the U.S. standard Cat.6A according to TIA 568-C.2, re-embedded tested in acc. with IEC 60603-7-51 and 60512-27-100, interoperable and backwards compatible with Category 6 and Category 5e. Suitable for 10GBASE-T applications in acc. with IEEE 802.3™ Section Four up to 500 MHz and 100 m. Tested in line with R&M's manufacturing control, performing 100% inspection. Each module has an own serial number and is traceable.

Compatible with RJ standard plugs (RJ11, RJ12, RJ45), connection of installation cables AWG 26 - 22 (0.4 mm - 0.65 mm) and flexible cables AWG 26/7 - AWG 22/7 without special tools. Parallel pair termination without crossover in acc. with TIA 568-A/B, gold-plated bronze contacts for >1000 mating cycles, IDC contacts with ≥4 insertion cycles acc. to IEC 60352-3, contact resistance <5 mOhm, dielectric strength >1000 Veff. PoE and PoE+ compatible according to IEC 60512-99-001. With integral cable strain relief, including dust cover, nickel plated zinc die-cast housing, ground contacting through 1 contact finger for flat connectors AMP 2.8 x 0.5 mm. Material: halogen-free and heavy-metal free in acc. with EU directives RoHS 2. Connection module Cat.6A EL, die-cast, shielded and dust cover.

	Description	PU	Product No.
	For the labeling of front plates and 19" insertions. Dimensions: A4. Material: paper, white, perforated.	1 Pcs.	R30871
	To cover one unused RJ45 connection module port with cut out 16.3 x 14.1 mm.	12 Pcs.	R812462
	Color coding clip for PC panel.	1 Pcs.	R812461
	Color coding clip for PC panel.	1 Pcs.	R812460
	Color coding clip for PC panel.	1 Pcs.	R810640
	Color coding clip for PC panel.	1 Pcs.	R810639

	Description	PU	Product No.
	Color coding clip for PC panel.	1 Pcs.	R820300
	Color coding clip for PC panel.	1 Pcs.	R832236
	The patching ring protects the admissible bending radius of the fiber glass cable. Mounted at the front of the 19" profiles. Material: 1.5 mm sheet steel, powder-coated.	1 Pcs.	R302005
	Sensor bar featuring 24 RFID readers. Suitable for the R&M 19" 1U PC Patch Panel Cat. 6A ISO and Cat. 6A EL (24 ports).	1 Pcs.	R812772
	Holders for installing the sensor bar on the R&M HD patch panel.	10 Pcs.	R809355