

Patch panel, Category 5E, 24xRJ45/u

P/N: KEP-C5E-U-TL

1
Gigabit

Cat.5E

100
MHz

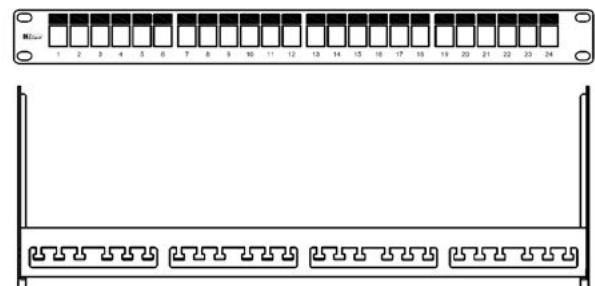
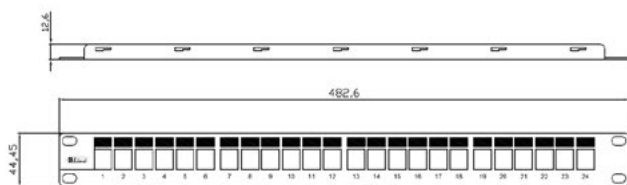


features

- 24 keystone jacks included (KEJ-C5E-U-TL)
- designed for 19" cabinets
- integrated cable management
- cable ties for gripping (24 pcs)
- set of M6 screws and captive nuts (4 pcs)
- grounding screw and washer (1 pc)

application

- primary (Campus), secondary (Riser), tertiary (Horizontal)
- IEEE 802.3: 10Base-T; 100Base-T; 1000Base-T
- IEEE 802.5 16 MB; ISDN; FDDI; ATM



construction

Height	1U (44,5 mm)	
Width	19" (482,6 mm)	
Depth (including cable management)	152 mm	
Material	front face	steel
	cable management	nickel-plated steel, corrosion-resistant
Color	black RAL9005	
Surface	structured, matt	

Keystone jack KEJ-C5E-U-TL mechanical properties

Note: for detailed information see datasheet for keystone jack KEJ-C5E-U-TL

Suitable for installing on	cables with solid wires	from 0,51 to 0,64 mm (AWG 24 - AWG 22)
Contact pin material	phosphor-bronze alloy coated with 6 μ of gold	
Insertion / extraction cycles	min. 750	
Temperature range	operation	-40°C až +70°C
	installation	-10°C až +60°C
IDC retermination	≤ 20	