

Patch panel, Category 6_A , 24xRJ45/s

P/N: KEP-C6A-S-10G

10
Gigabit

Cat.6_A
interoperable

500
MHz

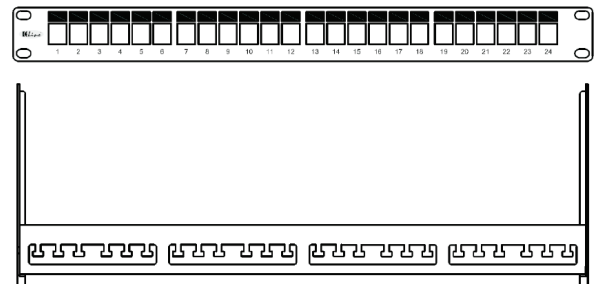
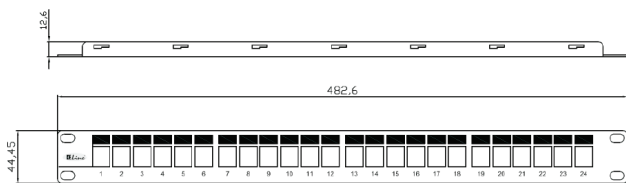
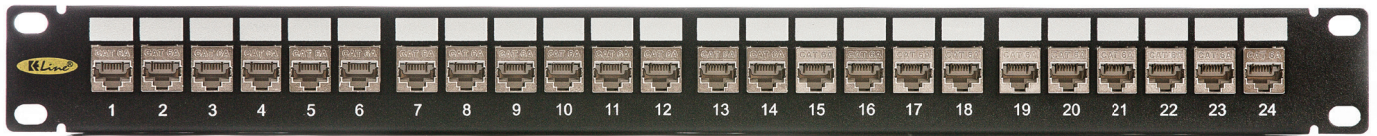


features

- 24 keystone jacks included (KEJ-C6A-S-10G)
- designed for 19" cabinets
- integrated cable management
- cable ties for gripping (24 pcs)
- set of M6 screws and captive nuts (4 pcs)
- grounding screw and washer (1 pc)

application

- primary (Campus), secondary (Riser), tertiary (Horizontal)
- IEEE 802.3: 10Base-T; 100Base-T; 1000Base-T; 10GBase-T
- IEEE 802.5 16 MB; ISDN; FDDI; ATM
- high bandwidth digital applications with low BER
- multimedia transmissions like digital and analog video and voice



construction

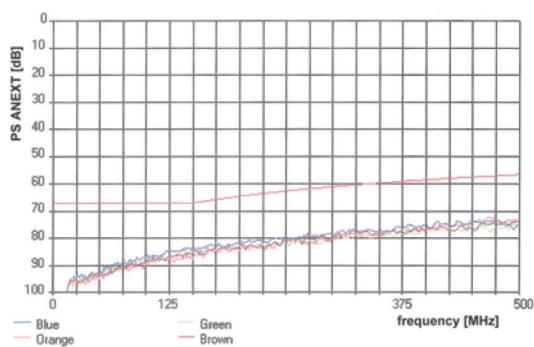
Height	1U (44,5 mm)	
Width	19" (482,6 mm)	
Depth (including cable management)	152 mm	
Material	front face	steel
	cable management	nickel-plated steel, corrosion-resistant
Color	black RAL9005	
Surface	structured, matt	

keystone jack KEJ-C6A-S-10G mechanical properties

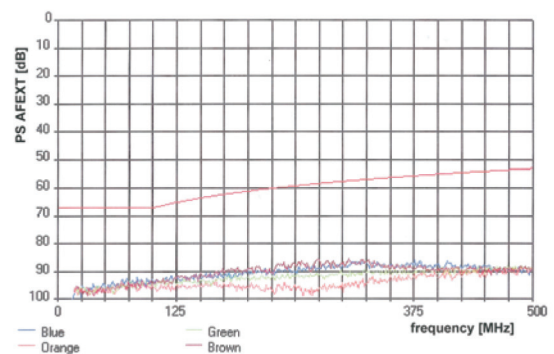
Note: for detailed information see datasheet for keystone jack KEJ-C6A-S-10G

Suitable for installing on	cables with solid wires	from 0,51 to 0,64 mm (AWG 24 - AWG 22)
	cables with stranded wires	from AWG 26/7 to AWG 24/7
Contact pin material	phosphor-bronze alloy coated with 50 μ of gold	
Insertion / extraction cycles	min. 750	
Temperature range	installation	-40°C to +70°C
	operation	-10°C to +60°C
IDC retermination	min.20	

typical PS ANEXT



typical PS AFEXT



related products

P/N: KEJ-C6A-S-10G	Keystone Jack, Category 6 _A , RJ45/s
P/N: 601140-AP + KEJ-C6A-S-10G(2)	Modulo50 outlet, Category 6 _A , 2xRJ45/s
P/N: 601120-UP + KEJ-C6A-S-10G(2)	Modulo45 outlet, Category 6 _A , 2xRJ45/s
P/N: KE500S23/1E	STP cable 4x2xAWG23, Category 6 _A , 500 MHz, LSOH
P/N: KE1200HS23	S/FTP cable 4x2xAWG23, Category 7 _A , 1200 MHz, LSOH
P/N: KEL-C6A-P-xxx	STP patch cable, Category 6 _A , LSOH



This product is certified on a component level by DELTA international independent laboratories according to ISO/IEC 11801:2011 (Ed. 2.2), IEC 60603-7-51:2010, EN 50173-1:2011, EN 50173-2:2007 amendment A1:2010, ANSI/TIA-568-C.2:2009. The original certificate is available and can be downloaded directly from DELTA website by scanning a QR code (on the left).



Mass production of this product is carried out under the supervision of DELTA laboratories.