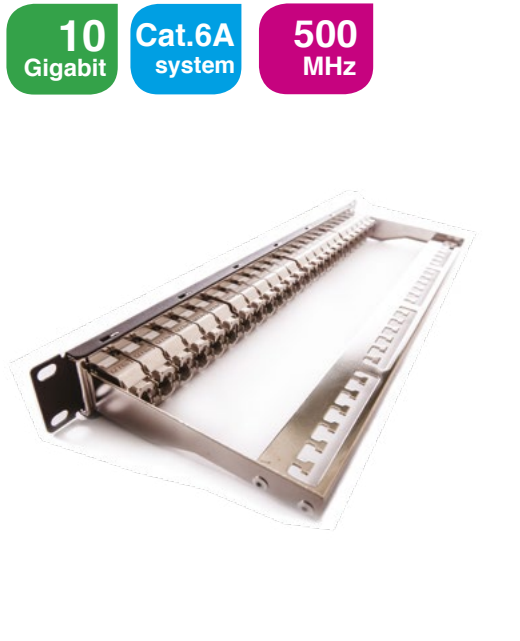


Patch panel, Category 6A / Class E_A , 24xRJ45/s

P/N: KEP-CEA-S-10G



10
Gigabit

Cat.6A
system

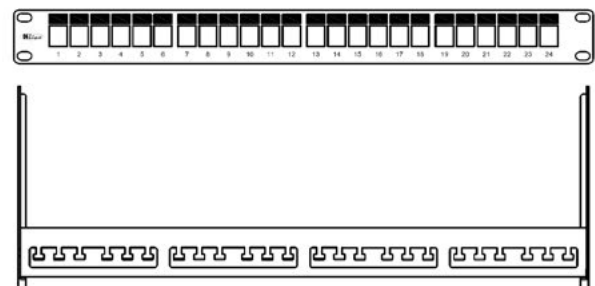
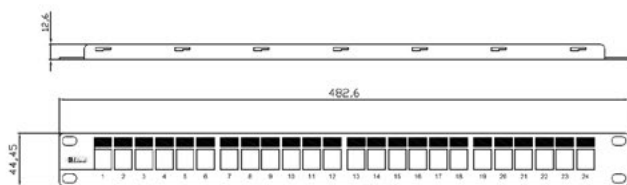
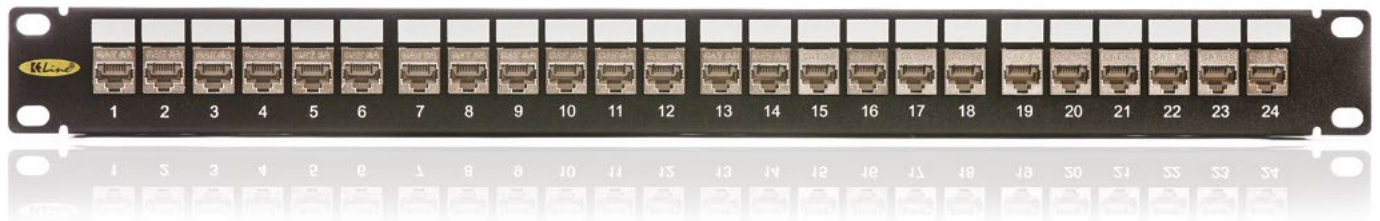
500
MHz

features

- 24 keystone jacks included (KEJ-CEA-S-10G)
- designed for 19" cabinets
- integrated cable management
- cable ties for gripping (24 pcs)
- set of M6 screws and captive nuts (4 pcs)
- grounding screw and washer (1 pc)

application

- primary (Campus), secondary (Riser), tertiary (Horizontal)
- IEEE 802.3: 10Base-T; 100Base-T; 1000Base-T
- IEEE 802.5 16 MB; ISDN; FDDI; ATM
- high bandwidth digital applications with low BER
- multimedia transmissions like digital and analog video and voice



construction

Height	1U (44,5 mm)	
Width	19" (482,6 mm)	
Depth (including cable management)	152 mm	
Material	front face	steel
	cable management	nickel-plated steel, corrosion-resistant
Color	black RAL9005	
Surface	structured, matt	

keystone jack KEJ-CEA-S-10G mechanical properties

Note: for detailed information see datasheet for keystone jack KEJ-CEA-S-10G

Suitable for installing on	cables with solid wires	from 0,51 to 0,64 mm (AWG 24 - AWG 22)
Required installation depth	15 - 35 mm sockets with angled faceplates	
	42 mm - sockets with straight faceplates	
Contact pin material	phosphor-bronze alloy coated with 6 μ of gold	
Insertion / extraction cycles RJ45	min. 750	
Temperature range	operation	-40°C to +70°C
	installation	-10°C to +60°C
IDC reterminations	min.20	