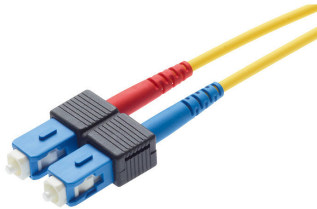


## Product information

Patch Cord SC-Duplex PC - SC-Duplex PC, blue,  
G.652.D, D/3, F8 2.7x5.5mm, 5 m

R317502  
1 Pcs.



Both sides fitted with one SC-Duplex PC connector.  
Connector color: blue.  
Fiber: SM E9/125 G.652.D (OS1, OS2).  
Cable: F8 2.7x5.5 mm, yellow.

090.5600 / similar product

### Technical Data

DESCRIPTION [UNIT]	VALUE/VALUE RANGE
Protection class IP	IP 20
Connector class	connector
Protection class IP (A)	IP 20
Number of connectors (A)	1
Protection class IP (B)	IP 20
Number of connectors (B)	1
Cable type	patch cord
Jacket material	LSZH
Cable jacket characteristics	Cable, metal-free Zero-halogen Flame-retardant
Cable overall diameter	F8 2.7 x 5.5 mm ( $\pm 0.15$ )
Connector type (A)	SC-Duplex
Polishing plug (A)	PC
Attenuation grade IL (A)	D
Return loss grade RL (A)	3
Connector color (A)	blue
Connector type (B)	SC-Duplex
Polishing plug (B)	PC
Attenuation grade IL (B)	D
Return loss grade RL (B)	3
Connector color (B)	blue
Fiber type	singlemode (SM)
Fiber class	G.652.D (OS1, OS2)

DESCRIPTION [UNIT]	VALUE/VALUE RANGE
Conductor type	tight buffer
Fiber diameter	E9 / 125 µm
Patch cord type	duplex figure 8

## Mechanical Data

DESCRIPTION [UNIT]	VALUE/VALUE RANGE
Cable length	5 m
Color	yellow

Patch cord with LSZH jacket, F8 2.7x5.5 mm, yellow, singlemode G652.D 9/125 µm (OS1, OS2), length 5.

Mounted on both sides with SC-Duplex connectors in acc. with IEC 61754-4. Zirconia (ceramic) ferrule with a PC polished endface geometry, connectors qualified in acc. with IEC 61753-1 for category U (uncontrolled environment). Blue connector housing (singlemode), material PBT / UL 94 V-0, black duplex clip, 1 x blue and 1 x red strain relief, material TPE / UL 94 V-0 and plastic dust cover.


Optical specifications (random mated):

Performance acc. to IEC 61753-1 (Table A.12):

- Insertion loss (IL) Grade D for 97% of the tested specimen:  $\leq 1.00$  dB / typical  $\leq 0.50$  dB
- Return loss (RL) Grade 3:  $\geq 35$  dB (typical  $\geq 45$  dB)

Mechanical specifications:

- Mating cycles:  $\Delta$  IL  $< 0.2$  dB after 500 mating cycles
- Pull-out force patch cord:  $\geq 100$  N (per connector)

	Description	PU	Product No.
	With the subsequent mountable 90° boot existing or new networks can be updated. The 90° boot guarantees an optimised fiber guidance ( $R > 30$ mm), even by load caused by the cable. An uncontrolled fiber bending and resulting attenuation or even broken fiber can be avoided in no time.	12 Pcs.	R505756