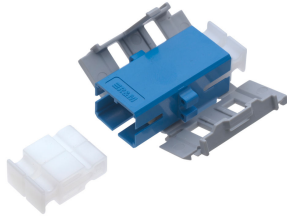


# Product information

## Adapter SC-RJ PC, blue, ceramic SM, C, Snap-in

R318276  
12 Pcs.



- SC-RJ adapter with semi-transparent dust caps
- Snap-in frame with coding clip, gray
- Installation instructions

090.2734

### Technical Data

DESCRIPTION [UNIT]	VALUE/VALUE RANGE
Standard	UL Listed acc. to IEC 61754-24
Protection class IP	IP 20
Connector class	adapter
Number of connectors (A)	1
Holder for connector / module	Snap-in
Connector type (A)	SC-RJ
Polishing plug (A)	PC
Attenuation grade IL (A)	C
Connector color (A)	blue
Sleeve material	ceramic
Fiber type	singlemode (SM)

SC-RJ adapter singlemode, duplex adapter in acc. with IEC 61754-24. Body plus flange and snap-in frame plus coding clip (gray). For fitting into 14.9 x 19.5 mm with a material thickness of between 1.5 mm and 2.0 mm. Zirconia (ceramic) alignment sleeve, blue housing (singlemode), material PPA / UL 94 V-0, semi-transparent plastic dust cover, allowing optical testing with test lasers without removing the cover. Adapter qualified in acc. with IEC 61753-1 for category U (uncontrolled environment).

Optical specifications:

- Delta insertion loss:  $\leq 0.2$  dB, testing method acc. to IEC 61300-3-4


Mechanical specifications:

- Mating cycles: min. 500
- Pull-out force: min. 40 N (per connector)

Optional:

Visual coding, mechanical coding and lock protection.

	Description	PU	Product No.
	Color coding clip for snap-in adapters.	10 Pcs.	R302151
	Color coding clip for snap-in adapters.	10 Pcs.	R302152
	Color coding clip for snap-in adapters.	10 Pcs.	R302153
	Color coding clip for snap-in adapters.	10 Pcs.	R302158
	Color coding clip for snap-in adapters.	10 Pcs.	R302154
	Color coding clip for snap-in adapters.	10 Pcs.	R302155
	Color coding clip for snap-in adapters.	10 Pcs.	R302156

	Description	PU	Product No.
	Color coding clip for snap-in adapters.	10 Pcs.	R302157
	Color coding for SC-RJ adapter. Pin mechanically coded. Can be combined with security system levels 1 and 3.	12 Pcs.	R318298
	Color coding for SC-RJ adapter. Pin mechanically coded. Can be combined with security system levels 1 and 3.	12 Pcs.	R318302
	Color coding for SC-RJ adapter. Pin mechanically coded. Can be combined with security system levels 1 and 3.	12 Pcs.	R318305
	Color coding for SC-RJ adapter. Pin mechanically coded. Can be combined with security system levels 1 and 3.	12 Pcs.	R318309
	Color coding for SC-RJ adapter. Pin mechanically coded. Can be combined with security system levels 1 and 3.	12 Pcs.	R318310
	Color coding for SC-RJ adapter. Pin mechanically coded. Can be combined with security system levels 1 and 3.	12 Pcs.	R318312