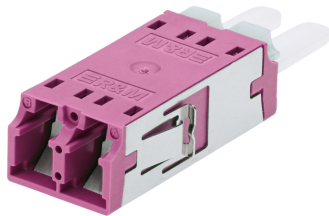


## Product information

### Adapter LC-Duplex PC, heather violet, ceramic MM, M, flangeless

R823206  
12 Pcs.



LC-Duplex adapter flangeless with semi-transparent dust caps. Quick mounting clip integrated.

090.7453

#### Technical Data

DESCRIPTION [UNIT]	VALUE/VALUE RANGE
Standard	UL Listed
Connector type (A)	LC-Duplex
Sleeve material	ceramic
Adapter fastening method	end cap snap-in
Fiber type	multimode (MM)

#### Mechanical Data

DESCRIPTION [UNIT]	VALUE/VALUE RANGE
Width	55 mm
Height	15.5 mm
Depth	9.35 mm

LC-Duplex multimode adapter in acc. with IEC 61754-20. Flangeless body and integrated quick-mounting clip, color metallic, material X10CrNi18-8. Housing heather violet (multimode PC), material PBT / UL 94 V-0, zirconia (ceramic) alignment sleeve, integral self-closing metal laser protection flaps, semi-transparent plastic dust covers, allowing optical testing with test lasers without removing the covers. The adapter qualified in acc. with IEC 61753-1 for category U (uncontrolled environment).

Optical specifications:

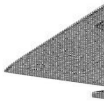
- Delta insertion loss:  $\leq 0.2$  dB, testing method acc. to IEC 61300-3-4

Mechanical specifications:

- Mating cycles: min. 500
- Pull-out force: min. 70 N

Optional:

Visual coding, mechanical coding and lock protection.

	Description	PU	Product No.
	45° Clip for LSH/LCd/SC adapter (flange less!)	10 Pcs.	R815789