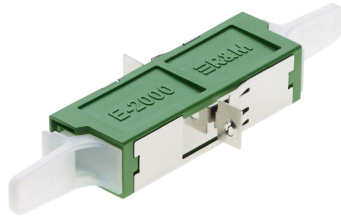


Product information

Adapter E-2000™ APC, green, ceramic SM, B, screwable

R823253
12 Pcs.



090.7448

Adapter E-2000™ with semi-transparent dust caps. Quick mounting clip and M2 thread integrated.

- Adapter E-2000™
- 2 Philips head screws M2 x 8, blue galvanized

Technical Data

DESCRIPTION [UNIT]	VALUE/VALUE RANGE
Standard	acc. to IEC 61754-15 acc. to DIN EN 186270
Protection class IP	IP 20
Connector class	adapter
Protection class IP (A)	IP 20
Number of connectors (A)	1
Connector type (A)	E-2000™
Polishing plug (A)	APC 8°
Attenuation grade IL (A)	B
Connector color (A)	green
Sleeve material	ceramic
Adapter fastening method	end cap
Fiber type	singlemode (SM)

Mechanical Data

DESCRIPTION [UNIT]	VALUE/VALUE RANGE
Width	67.7 mm
Height	22 mm
Depth	9.35 mm

E-2000™ adapter (LSH) singlemode (SM) in acc. with IEC 61754-15 and EN 186270. Adapter body plus flange and integrated quick-mounting clip and M2 thread, color metallic, material X10CrNi18-8 for screw mounting. Housing

green (singlemode (SM) APC 8°), material PBT / UL 94 V-0, zirconia (ceramic) alignment sleeve, integral self-closing metal laser protection flaps, semi-transparent plastic dust covers, allowing optical testing with test lasers without removing the covers. The adapter qualified in accordance with IEC 61753-1 for category U (uncontrolled environment).

Optical specifications:

- Delta insertion loss: ≤ 0.1 dB, testing method acc. to IEC 61300-3-4

Mechanical specifications:

- Mating cycles: min. 1000
- Pull-out force: min. 70 N

Optional:

- Visual coding, mechanical coding and lock protection

	Description	PU	Product No.
	Color coding for E-2000™ adapter. Color clip not mechanically coded.	12 Pcs.	R823208
	Color coding for E-2000™ adapter. Color clip not mechanically coded.	12 Pcs.	R823209
	Color coding for E-2000™ adapter. Color clip not mechanically coded.	12 Pcs.	R823211
	Color coding for E-2000™ adapter. Color clip not mechanically coded.	12 Pcs.	R823212
	Color coding for E-2000™ adapter. Color clip not mechanically coded.	12 Pcs.	R823213
	Color coding for E-2000™ adapter. Color clip not mechanically coded.	12 Pcs.	R823214
	Color coding for E-2000™ adapter. Color clip not mechanically coded.	12 Pcs.	R823215

	Description	PU	Product No.
	Color coding for E-2000™ adapter. Color clip not mechanically coded.	12 Pcs.	R823216
	Color coding for E-2000™ adapter. Color clip not mechanically coded.	12 Pcs.	R823217
	Color coding for E-2000™ adapter. Color clip not mechanically coded.	12 Pcs.	R823218
	Color coding for E-2000™ adapter. Color clip not mechanically coded.	12 Pcs.	R823219
	Color coding for E-2000™ adapter. Color clip not mechanically coded.	12 Pcs.	R823210
	Color coding for E-2000™ adapter. Color clip mechanically coded.	12 Pcs.	R823220
	Color coding for E-2000™ adapter. Color clip mechanically coded.	12 Pcs.	R823221
	Color coding for E-2000™ adapter. Color clip mechanically coded.	12 Pcs.	R823222

	Description	PU	Product No.
	Color coding for E-2000™ adapter. Color clip mechanically coded.	12 Pcs.	R823223
	Color coding for E-2000™ adapter. Color clip mechanically coded.	12 Pcs.	R823224
	Color coding for E-2000™ adapter. Color clip mechanically coded.	12 Pcs.	R823225