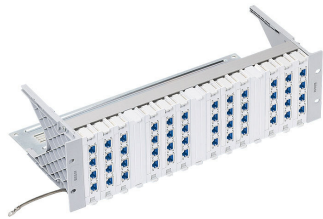


Product information

19" 3U Global Patch Panel 48xRJ45/s, Real10 Cat. 6, partly populated

R302360
1 Pcs.



010.2053

- 19" 3U Global patch panel/s incl. cable tie shelf
- 12 connection module holders Global/s
- 3 Global blind covers
- Grounding system
- 48 Real10 Cat. 6 connection modules, RJ45/s incl. EMC covers and dust covers
- Labeling strips
- 19" mounting kit
- Cable ties
- Installation instructions

Technical Data

DESCRIPTION [UNIT]	VALUE/VALUE RANGE
Standard	EN 50173-1: May 2011 IEC 60603-7: Electrical Characteristics of the Telecommunication Outlets ISO/IEC 11801 ed. 2.2: June 2011
Protection class IP	IP 20
PoE	Yes
Shielding connector (A)	shielded
Connector type (A)	RJ45
Category connector (A)	Real10 Cat. 6
Number of connectors (A)	48
Holder for connector / module	Module holder
Assembly	partly populated
Fastening	19 "
Rack mounting version	patch panel
Capacity (ports)	60
Amount of Height Units	3 U

Mechanical Data

DESCRIPTION [UNIT]	VALUE/VALUE RANGE
Width	482.6 mm
Height	132.5 mm
Depth	221 mm
Color Code NCS	S 2502-B

Modular patch panel accommodating up to fifteen connection module holders Global/s, installation-friendly thanks to snap-and-go technique, featuring a complete grounding system and Global blind cover. Designed to accommodate the R&M security and the R&M environment system, with its 3-level protection concept: color





coding, mechanical coding, locking option. Exchangeable labeling strips, integral cable tie shelf, fastening kit, labeling fields, tool-free locking and unlocking system. Automatic ground contacting by spring contacts. Profile aluminum, colorless chromated; cable tie shelf sheet steel (DC01A) 1.5 mm, color blue passivated; side panel plastic (PA), fiberglass-reinforced, halogen-free, color medium gray (NCS 2502-B). Connection module holder Global, shielded, plastic (PC), halogen-free, color light gray (NCS 1005-R80B). Blind cover Global, plastic (PC), to cover unused ports, halogen-free materials, color light gray (NCS 1005-R80B). RJ45 connection module of Category 6, for the setting up of transmission channels of class E and class EA (and Cat. 6/Cat. 6A) with up to 4 plugged connections, and class F on 2 pairs, complies with Category 6 requirements of the standards ISO/IEC 11801 ed. 2.2, June 2011, EN 50173-1, May 2011 (DIN EN 50173-1) as well as TIA 568-C, de-embedded tested in acc. with IEC 60603-7-5, interoperable and backwards compatible with Category 5e and Category 5.

Suitable for 10GBASE-T applications in acc. with IEEE 802.3™ Section Four up to 500 MHz and 100 m. Tested on the basis of the R&M production control including 100% routine test plus permanent quality assurance through the "GHMT PREMIUM Verification Program" including certificate and test report acc. to DIN EN ISO/IEC 17025, in German language.

Compatible with RJ standard plugs (RJ11, RJ12, RJ45), PCB-free and tool-free Easy-Lock connection of installation cables AWG 24 - 22 (0.5 mm - 0.65 mm) and flexible cables AWG 26/7 - AWG 22/7. Parallel pair termination without crossover in acc. with TIA 568-A/B, gold-plated bronze contacts for >1000 mating cycles, IDC contacts with single-wire strain relief and >20 insertion cycles, contact resistance <50 mOhm, dielectric strength >1000 Veff. PoE and PoE+ compatible according to IEC 60512-99-001. Shield contacting by patented shield lance with integral cable strain relief, shield material tin-coated bronze, ground contacting through 2 contact fingers for flat connectors 4.8 x 0.5 mm.

Material: halogen-free and heavy-metal free in acc. with EU directives RoHS 2.

Connection module Cat. 6, shielded, with EMC cover, dust cover, mounting plate, cable tie and installation instructions.

	Description	PU	Product No.
	For the labeling of front plates and 19" insertions. Dimensions: A4. Material: paper, white, perforated.	1 Pcs.	R30871
	Plastic plate with four mounted jumpering brackets. For a neat, horizontal routing of patch cords between patching fields. The reinforced plastic plate and snap-in jumpering brackets provide additional stability and quick mounting.	1 Pcs.	R306179
	Plastic plate with eight mounted jumpering brackets. For a neat, horizontal routing of patch cords between patching fields. The reinforced plastic plate and snap-in jumpering brackets provide additional stability and quick mounting.	1 Pcs.	R306180
	For vertical cable management with the Global 3U patch panel. Fast installation - slides under Global 3U panel mounting screws. Flexible - mounts on left or right and on inside or outside of panel. Saves space through higher port densities. Width: 1.5 GU	1 Pcs.	R316247

	Description	PU	Product No.
	The radius guard guarantees compliance with admissible bending radius of copper and FO cables. The guard is mounted to the front of 19" racks. Color: medium gray (NCS 2503-B)	1 Pcs.	R306181
	Dust cover and color coding for RJ45 outlets and patch panels. Fitting R&M Smartholes.	10 Pcs.	R305685
	Dust cover and color coding for RJ45 outlets and patch panels. Fitting R&M Smartholes.	10 Pcs.	R305686
	Dust cover and color coding for RJ45 outlets and patch panels. Fitting R&M Smartholes.	10 Pcs.	R305687
	Dust cover and color coding for RJ45 outlets and patch panels. Fitting R&M Smartholes.	10 Pcs.	R305688
	Dust cover and color coding for RJ45 outlets and patch panels. Fitting R&M Smartholes.	10 Pcs.	R305689
	Dust cover and color coding for RJ45 outlets and patch panels. Fitting R&M Smartholes.	10 Pcs.	R305690

	Description	PU	Product No.
	Dust cover and color coding for RJ45 outlets and patch panels. Fitting R&M Smartholes.	10 Pcs.	R305691
	Dust cover and color coding for RJ45 outlets and patch panels. Fitting R&M Smartholes.	10 Pcs.	R305692
	Dust cover and color coding for RJ45 outlets and patch panels. Fitting R&M Smartholes.	10 Pcs.	R305693
	Offering dust protection and color coding to data outlets and patch panels. The cap with its rubber seal provide protection class IP54.	10 Pcs.	R306063
	Offering dust protection and color coding to data outlets and patch panels. The cap with its rubber seal provide protection class IP54.	10 Pcs.	R306058
	Offering dust protection and color coding to data outlets and patch panels. The cap with its rubber seal provide protection class IP54.	10 Pcs.	R306060
	Offering dust protection and color coding to data outlets and patch panels. The cap with its rubber seal provide protection class IP54.	10 Pcs.	R306061

	Description	PU	Product No.
	Offering dust protection and color coding to data outlets and patch panels. The cap with its rubber seal provide protection class IP54.	10 Pcs.	R306062
	Color code: blue, red, green, anthracite. Fitting R&M Smartholes.	20 Pcs.	R25107
	Color code: yellow, brown, violet, white. Fitting R&M Smartholes.	20 Pcs.	R25676
	Prevents RJ45 plugs (data) being plugged into RJ45 outlets defined as telephone sockets (RJ11 connectors) by mistake. Compatible with R&M RJ45 modules.	10 Pcs.	R310835
	RJ45 connection protection for outlets and patch panels. Fitting R&M Smartholes.	20 Pcs.	R304825
	RJ45 connection protection for outlets and patch panels. Fitting R&M Smartholes.	20 Pcs.	R304827
	RJ45 connection protection for outlets and patch panels. Fitting R&M Smartholes.	20 Pcs.	R304826