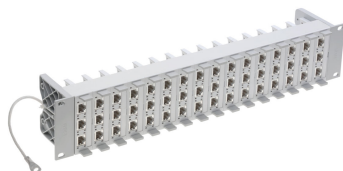


Product information

19" 2U Global Patch Panel 48xRJ45/s, Cat. 5e, fully populated

R505715
966733195
1 Pcs.



- 19" 2U Global patch panel/s
- 16 connection module holders 2U Global/s
- Grounding system
- 48 Cat. 5e connection modules, RJ45/s incl. EMC covers and dust covers
- Labeling strips
- 19" mounting kit
- Cable ties
- Installation instructions

090.5343

Technical Data

DESCRIPTION [UNIT]	VALUE/VALUE RANGE
Standard	EN 50173-1: May 2011 IEC 60603-7: Electrical Characteristics of the Telecommunication Outlets ISO/IEC 11801 ed. 2.2: June 2011
Protection class IP	IP 20
PoE	Yes
Shielding connector (A)	shielded
Connector type (A)	RJ45
Category connector (A)	Cat. 5e
Holder for connector / module	Module holder
Assembly	fully populated
Fastening	19 "
Rack mounting version	patch panel
Capacity (ports)	48
Amount of height units	2 U

Mechanical Data

DESCRIPTION [UNIT]	VALUE/VALUE RANGE
Width	482.6 mm
Height	88.1 mm
Depth	82 mm
Color Code NCS	S 2502-B

Modular patch panel accommodating up to sixteen connection module holders 2U Global/s, installation-friendly thanks to snap-and-go technique, featuring a complete grounding system and 2U Global blind cover. Designed to accommodate the R&M security and the R&M environment system, with its 3-level protection concept: color coding, mechanical coding, locking option. Exchangeable labeling strips, fastening kit, labeling fields, tool-free locking and unlocking system. Automatic ground contacting by spring contacts. Profile

aluminum, colorless chromated; side panel plastic (PC), fiberglass-reinforced, halogen-free, color medium gray (NCS 2502-B).

Connection module holder 2U Global, shielded, plastic (PC), halogen-free, color light gray (NCS 1005-R80B).

RJ45 connection module of Category 5, for the setting up of transmission channels of class D with up to 4 plugged connections and class E with up to 2 plugged connections when using a R&M Cat. 7 system cable, complies with Category 5 requirements of the standards ISO/IEC 11801 ed. 2.2, June 2011, EN 50173-1, May 2011 (DIN EN 50173-1) as well as TIA 568-C, de-embedded tested in acc. with IEC 60603-7-3, interoperable and backwards compatible with Category 5e (2000) and Category 5 (1995).

Suitable for 1GBASE-T applications in acc. with IEEE 802.3™ Section Three over 100 m.





Tested in line with R&M's manufacturing control, performing 100% inspection.

Compatible with RJ standard plugs (RJ11, RJ12, RJ45), PCB-free and tool-free Easy-Lock connection of installation cables AWG 24 - 22 (0.5 mm - 0.65 mm) and flexible cables AWG 26/7 - AWG 22/7 (as of production date 07461).

Parallel pair termination without crossover in acc. with TIA 568-A/B, gold-plated bronze contacts for >1000 mating cycles, IDC contacts with single-wire strain relief and >20 insertion cycles, contact resistance <100 mOhm, dielectric strength >1000 Veff. PoE and PoE+ compatible according to IEC 60512-99-001. Shield contacting by patented shield lance with integral cable strain relief, shield material tin-coated bronze, ground contacting through 2 contact fingers for flat connectors 4.8 x 0.5 mm, with EMC cover.

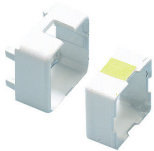




Material: halogen-free and heavy-metal free in acc. with EU directives RoHS 2.

Connection module Cat. 5e, with dust cover, EMC cover, mounting plate, cable tie and installation instructions.

	Description	PU	Product No.
	Suitable for laser printers. Material: paper, white, perforated.	1 Pcs.	R503380
	Plastic plate with four mounted jumpering brackets. For a neat, horizontal routing of patch cords between patching fields. The reinforced plastic plate and snap-in jumpering brackets provide additional stability and quick mounting.	1 Pcs.	R306179
	Plastic plate with eight mounted jumpering brackets. For a neat, horizontal routing of patch cords between patching fields. The reinforced plastic plate and snap-in jumpering brackets provide additional stability and quick mounting.	1 Pcs.	R306180
	For vertical cable management with the Global 2U patch panel. Fast installation - slides under Global 2U panel mounting screws. Flexible - mounts on left or right outside of panel. Saves space through higher port densities.	1 Pcs.	R505851
	Dust cover and color coding for RJ45 outlets and patch panels. Fitting R&M Smartholes.	10 Pcs.	R305685

	Description	PU	Product No.
	Dust cover and color coding for RJ45 outlets and patch panels. Fitting R&M Smartholes.	10 Pcs.	R305686
	Dust cover and color coding for RJ45 outlets and patch panels. Fitting R&M Smartholes.	10 Pcs.	R305687
	Dust cover and color coding for RJ45 outlets and patch panels. Fitting R&M Smartholes.	10 Pcs.	R305688
	Dust cover and color coding for RJ45 outlets and patch panels. Fitting R&M Smartholes.	10 Pcs.	R305689
	Dust cover and color coding for RJ45 outlets and patch panels. Fitting R&M Smartholes.	10 Pcs.	R305690
	Dust cover and color coding for RJ45 outlets and patch panels. Fitting R&M Smartholes.	10 Pcs.	R305691
	Dust cover and color coding for RJ45 outlets and patch panels. Fitting R&M Smartholes.	10 Pcs.	R305692

	Description	PU	Product No.
	Dust cover and color coding for RJ45 outlets and patch panels. Fitting R&M Smartholes.	10 Pcs.	R305693
	Offering dust protection and color coding to data outlets and patch panels. The cap with its rubber seal provide protection class IP54.	10 Pcs.	R306063
	Offering dust protection and color coding to data outlets and patch panels. The cap with its rubber seal provide protection class IP54.	10 Pcs.	R306058
	Offering dust protection and color coding to data outlets and patch panels. The cap with its rubber seal provide protection class IP54.	10 Pcs.	R306060
	Offering dust protection and color coding to data outlets and patch panels. The cap with its rubber seal provide protection class IP54.	10 Pcs.	R306061
	Offering dust protection and color coding to data outlets and patch panels. The cap with its rubber seal provide protection class IP54.	10 Pcs.	R306062
	Color code: blue, red, green, anthracite. Fitting R&M Smartholes.	20 Pcs.	R25107

	Description	PU	Product No.
	Color code: yellow, brown, violet, white. Fitting R&M Smartholes.	20 Pcs.	R25676
	Prevents RJ45 plugs (data) being plugged into RJ45 outlets defined as telephone sockets (RJ11 connectors) by mistake. Compatible with R&M RJ45 modules.	10 Pcs.	R310835
	RJ45 connection protection for outlets and patch panels. Fitting R&M Smartholes.	20 Pcs.	R304825
	RJ45 connection protection for outlets and patch panels. Fitting R&M Smartholes.	20 Pcs.	R304827
	RJ45 connection protection for outlets and patch panels. Fitting R&M Smartholes.	20 Pcs.	R304826